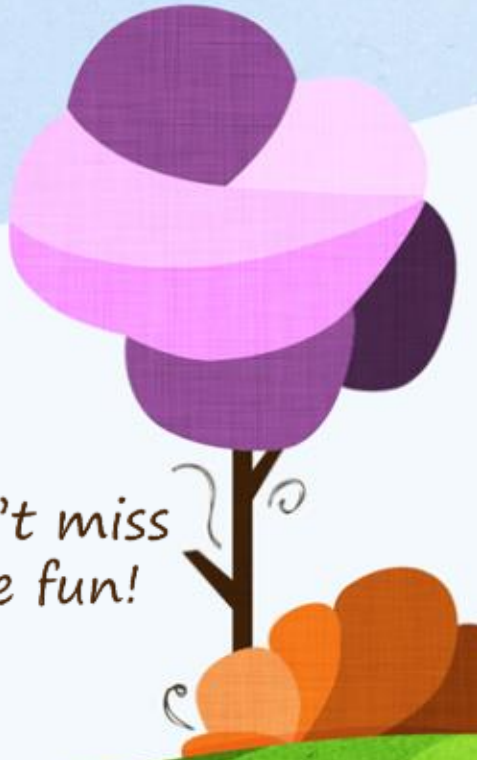


2017 Walla Walla Valley Quilt Guild Retreat

Friday Sept. 29th – Sunday Oct. 1st
Optional Thursday Add On Day



Don't miss
The fun!

Questions?
Kay Fortner
541-218-0313
Kay.fortner@yahoo.com

Port of Morrow Riverfront Center
– Boardman OR

\$85 Members/ \$110 Non-Members

- 3 days (Fri, Sat, Sun)
- 3 lunches/2 dinners
(breakfast on your own)
- add 4th day (Thursday)
by sharing cost with others
(On your own for meals Thursday)
(\$150/those attending)
- Want to juggle days for your schedule? Pay \$35
plus daily meal fee – ask Kay for Details
- Can't stay overnight but still want to join us for
a day? Pay the \$35 and meals fee for the day
ask Kay for details.

\$45 member/
\$65 Non-Member
Deposit Holds your spot

Accommodations: Your Choice

River Lodge & Grill with Group Rate
<http://riverlodgeandgrill.com/>
(1 minute walk away – includes mini fridge,
microwave & Keurig's in River Rooms)

- \$90 per night for Room
(2 Queens or Single King – your choice how many in the room)
- 1.888.988.2009 to make your own
reservations. **be sure to say you're with
WWVQG to get group rate

Boardman Good Sam's Marina and RV Park

<http://www.boardmanmarinapark.com/>
No Group Fees arranged, call to make your own reservations
About a 10 minute walk – 2 minute drive